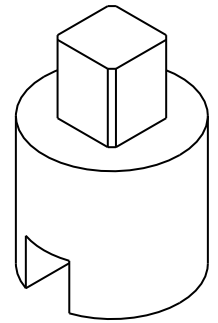
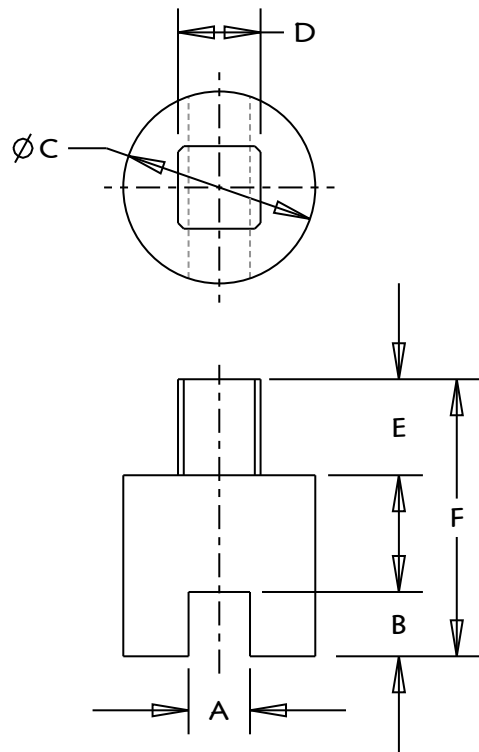
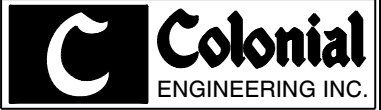


CUSTOMER PART NO:
-



2"	.690	.575	1.250	.550	.629	1.920	FO5	V20502A
2"	.690	.575	1.250	.430	.500	1.650	FO4	V20502A-FO4
1-1/4" 1-1/2"	.560	.570	1.250	.550	.629	1.740	FO5	V17502A
1-1/4" 1-1/2"	.560	.570	1.250	.430	.500	1.490	FO4	V17502A-FO4
1"	.440	.450	1.000	.430	.500	1.490	FO4	V10502A
3/4"	.380	.380	1.000	.430	.500	1.410	FO4	VO8502A
1/2"	.320	.335	1.000	.430	.500	1.443	FO4	VO7502A
SIZE	A	B	C	D	E	F	ISO	PART NO

B	ADDED P/N V17502A-FO4 AND V20502A-FO4	12-26-11
A	RELEASED	9-2-04
REV	DESCRIPTION	DATE
ENGINEERING REVISIONS		
TITLE		 COLONIAL ENGINEERING, INC. 6400 Corporate Ave Portage, MI 49002 <small>This drawing is the property of Colonial Engineering. It is furnished to you for confidential information purposes only and is not to be disclosed to anyone else or reproduced or used for manufacturing purposes without the express written permission of Colonial Engineering.</small>
MACHINED STEM COUPLING		
DESIGNED BY	DWG SIZE	
PB	A	
DRAWN BY	SHEET NO	
EJL	1 OF 1	
REVIEWED BY	SCALE	DRAWING NO
PB	1:1	K24034
DATE	LENGTH UNITS	
9-2-04	INCH	