

Colonial Y-Strainers are suitable for flow rates of up to 150 gpm, and can be installed either vertically or horizontally. Strainers are usually sized so that their start up pressure drop is no greater than 2 psi, with a line velocity not to exceed 5 fps.

SELECTION AND MAINTENANCE

The strainer branch of the Y-Strainer must be pointing downward so that gravity enables the trapping of debris. The system must be de-pressurized and drained prior to performing maintenance on plastic Y-Strainers. When removing the union nut to pull the strainer cartridge for cleaning or replacement, fluid trapped in the strainer will drain out. Care should be taken during this maintenance process so that the drainage is contained.

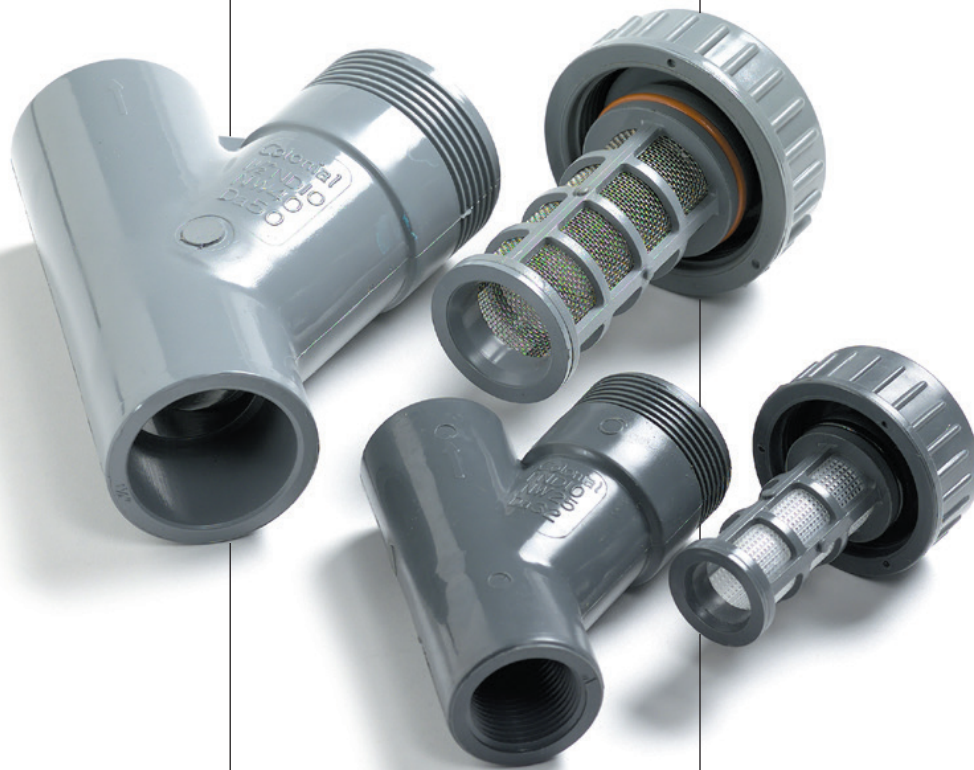
Plastic Y-Strainers are suitable for applications which require infrequent cleaning and in which the process media is environmentally safe.

When purchasing a Y-Strainer, it is recommended that a spare strainer cartridge is purchased. This will expedite maintenance because the operator may remove the dirty cartridge and immediately replace it with a clean one. The dirty cartridge can then be cleaned and stored for the next maintenance cycle.

MESH SIZES

The mesh sizes for Colonial screens are as follows:

- 40 mesh SS wire is 0.008" and the square opening is 0.016" by 0.016"
- 20 mesh SS wire is 0.012" and the square opening is 0.032" by 0.032"
- PP screens are advertised as 20 mesh openings which should be 0.032" but they are slightly smaller, actual square opening is around 0.028".



Printed in USA 3/13

FLUID FLOW COEFFICIENT

*Gallons per minute @ 1 psi pressure drop

Nominal Size	C,*
1/2"	2.25
3/4"	7.80
1"	15.00
1-1/4"	38.00
1-1/2"	50.00
2"	73.00

TEMPERATURE DE-RATING FOR STRAINERS, VALVES & UNIONS (ABOVE 73° F)

Temp (° F)	PVC	CPVC
73	1.00	1.00
80	.88	.96
90	.75	.92
100	.62	.85
110	.50	.77
120	.40	.70
130	.30	.62
140	.22	.55
150	NR	.47
160	NR	.40
170	NR	.32
180	NR	.25
200	NR	.18
210	NR	.15
240	NR	NR
280	NR	NR

NR: Not Recommended

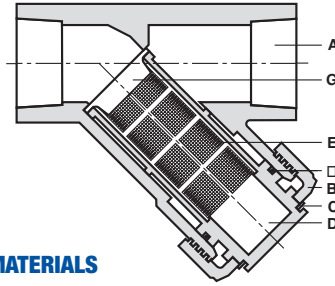
Caution: Colonial recommends a minimum installation distance of 10 X the pipe diameter from a pump or other sources of turbulence.

PART NUMBERS

Socket X Socket

PVC/EPDM		
Part No.	Size	Ctn Qty
V07281B	1/2	24
V08281B	3/4	24
V10281B	1	24
V14281B	1-1/4	12
V17281B	1-1/2	12
V20281B	2	9

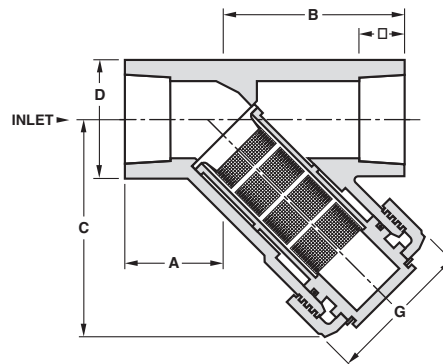
CPVC/VITON®		
Part No.	Size	Ctn Qty
V07284B	1/2	24
V08284B	3/4	24
V10284B	1	24
V14284B	1-1/4	12
V17284B	1-1/2	12
V20284B	2	9



COMPONENTS AND MATERIALS

Part Letter	Component	Quantity	Material
A	Body	1	PVC, CPVC
B	Union Nut	1	PVC, CPVC
C	Retainer	1	PVC, CPVC
D	Strainer Body	1	PVC, CPVC
E	Strainer Screen	1	SS, PP
F	Strainer O-Ring	1	EPDM, Viton®
G	Strainer Adapter	1	PVC, CPVC

Viton® is a registered trademark of Dupont Dow Elastomers.



DIMENSIONS

Slip X Slip

SIZE	A	B	C	D	F	G
1/2	1.219	2.125	2.625	1.188	0.875	1.906
3/4	1.406	2.406	3.094	1.438	1.031	2.000
1	1.625	2.750	3.656	1.750	1.156	2.469
1-1/4*	2.563	4.000	4.844	2.406	1.406	3.313
1-1/2	2.313	3.750	4.844	2.406	1.406	3.313
2	2.188	4.969	5.500	3.031	1.531	3.781

* Assembled with 1-1/2 Strainer and Reducing Bushings

MATERIAL CHOICES

Size	Material	Style	PVC Replacement Cartridges	CPVC Replacement Cartridges
1/2"	SS	20 Mesh	V07281BM	V07284BM
1/2"	SS	40 Mesh	V07281B0	V07284B0
1/2"	PP	20 Mesh	V07281PM	V07284PM
3/4"	SS	20 Mesh	V08281BM	V08284BM
3/4"	SS	40 Mesh	V08281B0	V08284B0
3/4"	PP	20 Mesh	V08281PM	V08284PM
1"	SS	20 Mesh	V10281BM	V10284BM
1"	SS	40 Mesh	V10281B0	V10284B0
1"	PP	20 Mesh	V10281PM	V10284PM
1-1/4"	SS	20 Mesh	V14281BM	V14284BM
1-1/4"	SS	40 Mesh	V14281B0	V14284B0
1-1/4"	PP	20 Mesh	V14281PM	V14284PM
1-1/2"	SS	20 Mesh	V17281BM	V17284BM
1-1/2"	SS	40 Mesh	V17281B0	V17284B0
1-1/2"	PP	20 Mesh	V17281PM	V17284PM
2"	SS	20 Mesh	V20281BM	V20284BM
2"	SS	40 Mesh	V20281B0	V20284B0
2"	PP	20 Mesh	V20281PM	V20284PM